

SMART
Remediation

Smart Methods in
Advanced Remediation
Technologies.

Virtual

3
FEBRUARY

*Remediation of Wetland Used by First Nation
for Plant Harvesting*



Muntazir Pardhan
Dillon Consulting Limited

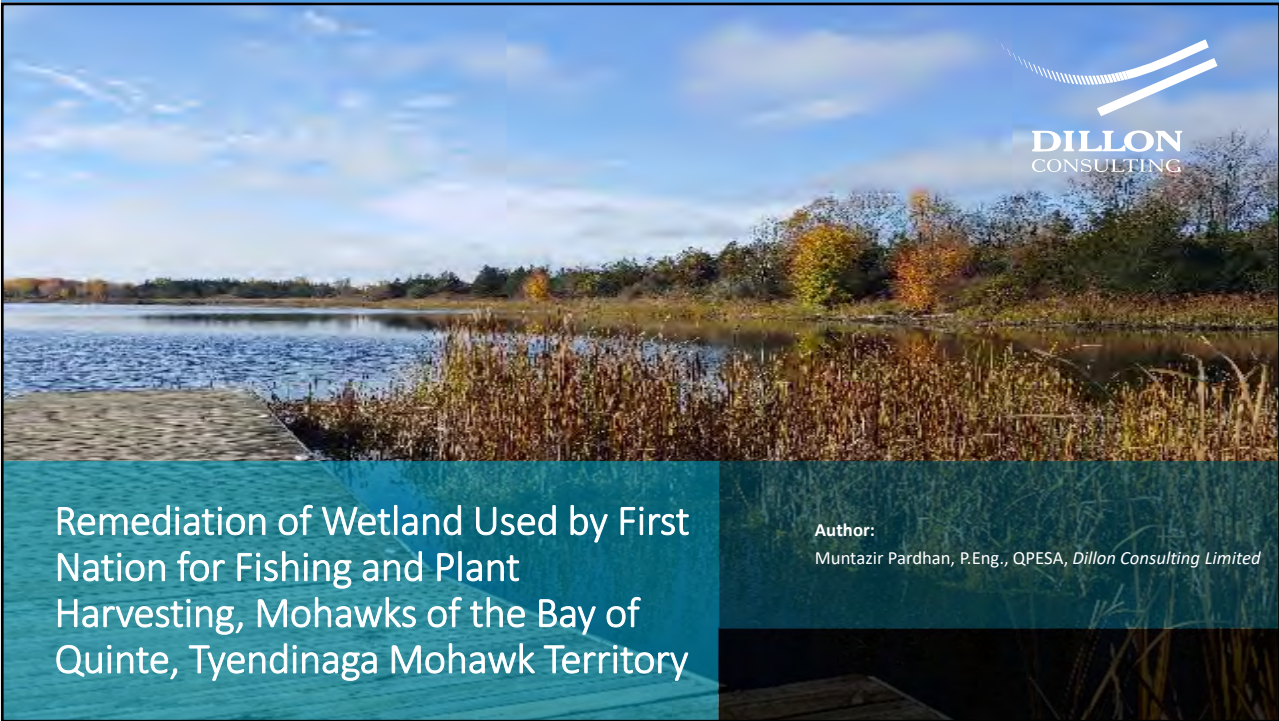
Virtual SMART Remediation Seminar
February 3, 2022

SMART is
Powered by:

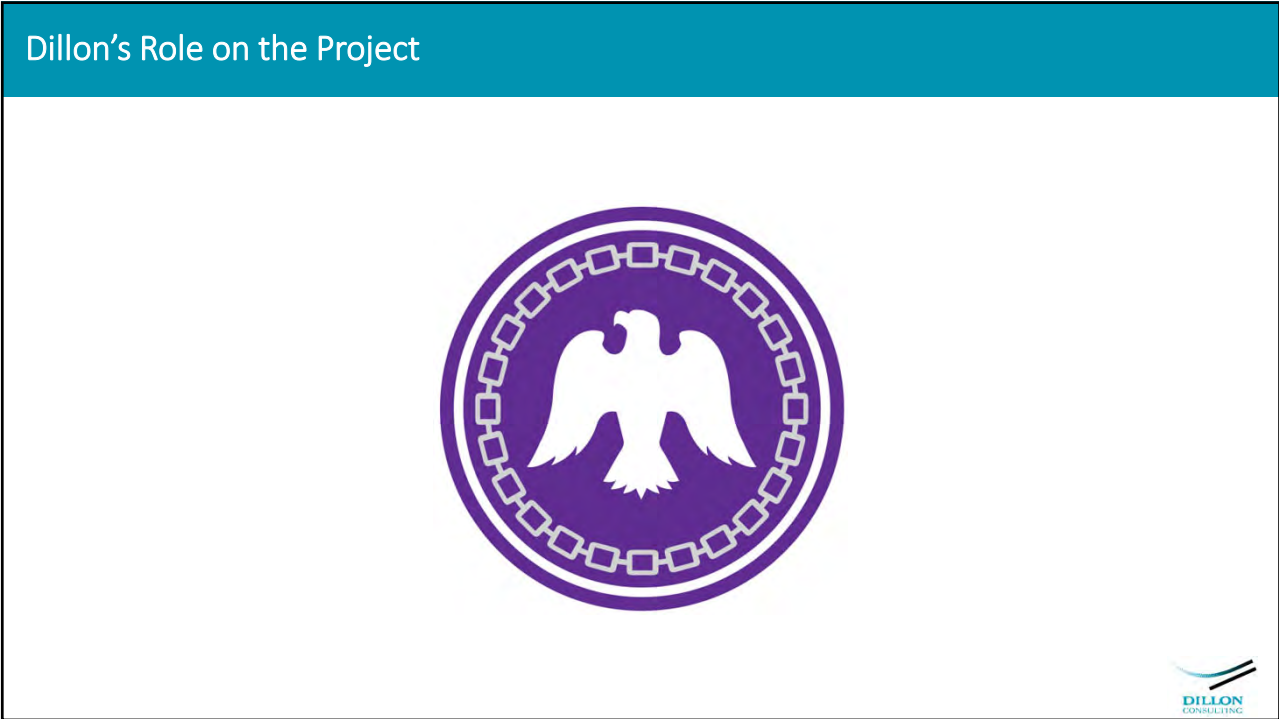


VERTEX
Environmental Inc.

www.vertexenvironmental.ca



1



2

Project Background



Addition to Reserve Process

- Environmental Studies over approx. 20 years.

Four Contaminated Sites

- A Former Gas Station
- An area with storage of refuse and debris
- Two areas formerly used for dumping and storage of debris



3

Dillon's Role on the Project

- Data Gaps Analysis
- Community Engagement
- Remedial Action Plan
- Remediation Design and Specifications
- Tendering
- Contract Administration
- Environmental Monitoring
- Site Closure Reporting



4

Former Gas Station – Parcel 5

Parcel 5 Soil Remediation

- Dig and Dump
- Easy Access
- No GW impacts
- No dewatering issues



5

Community Open House

Community Engagement

- Repurposing materials
- Fishing season
- Presence of medicinal plants
- Using local resources
- Training opportunities



6

Removal of the Source of Impacts – Parcel 1

Parcel 1 Challenges

- Heavily wooded area and wetland
- Steep embankment
- Removal by hand
- Two 8-yard bins full



7

Salmon River Challenges – Parcel 12

Parcel 12 Challenges

- Flooding and ice
- High water levels
- Protecting the river
- Maintaining site access



DAY 2



8

Wetland Area – Parcel 10



9

Functional Wetland Assessment – Parcel 10

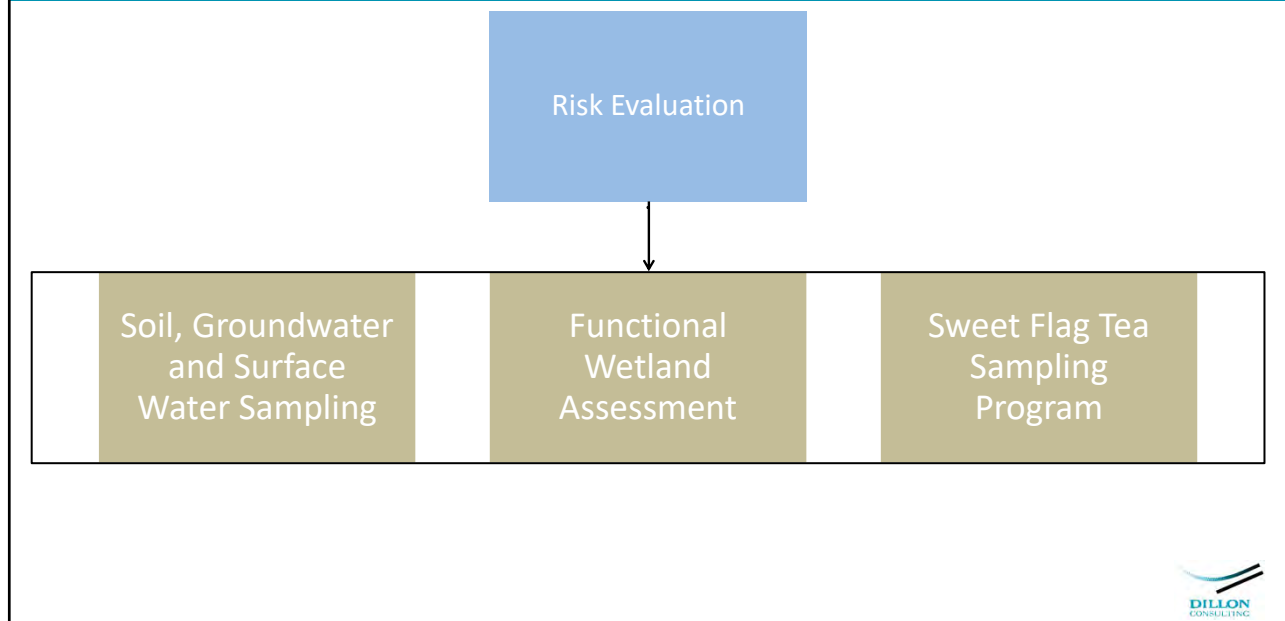
Parcel 10 Challenges

- Several wetland units
- Larger area of impacts
- Potential for Species at Risk
- Presence of Medicinal Plants
- Standing water



10

Risk Evaluation – Parcel 10



11

Functional Wetland Assessment – Parcel 10

Major Findings

- Several wildlife species
- Potential habitat for SAR
- Three wetland units
- Sweet Flag



12

Sweet Flag Tea Sampling – Parcel 10



13

Risk Evaluation Results – Parcel 10

Risk Evaluation Findings

- No GW concerns
- Limited additional excavation required
- Wetland area to remain undisturbed



14

Excavation and Dewatering – Parcel 10



15

Lessons Learned

Key Lessons Learned:

- Listen First
- Community Engagement
- Timely communication
- Understanding Traditional Land Uses
- Collaboration for innovative approaches
- Coordinate using local resources and staffing ahead of time



16

Questions?

Dillon Project Team:

- Muntazir Pardhan, P.Eng., QPESA, Dillon Consulting Limited
- Rebecca Appleton, P.Eng., MBA, Dillon Consulting Limited
- Michael Charles, P.Eng., Dillon Consulting Limited
- Lisa Marshall, PBD, M.E.S., Dillon Consulting Limited
- Sherry Dosman, Dillon Consulting Limited

Acknowledgements:

- Nicole Storms, Mohawks of the Bay of Quinte
- Aaron Dorland, Indigenous Services Canada
- Viktors Kulnieks, Indigenous Services Canada

